



Funding Opportunities at NCI

Center to Reduce Cancer Health Disparities

| CENTER TO REDUCE
| CANCER HEALTH DISPARITIES

NCI Center to Reduce Cancer Health Disparities (CRCHD)

CRCHD Mission

- **Advance cancer disparities research** across the entire cancer continuum.
- **Advise** on strategic planning and policies related to cancer disparities research and diversity training.
- Lead NCI's efforts in **increasing workforce diversity**.

CRCHD Focus Areas

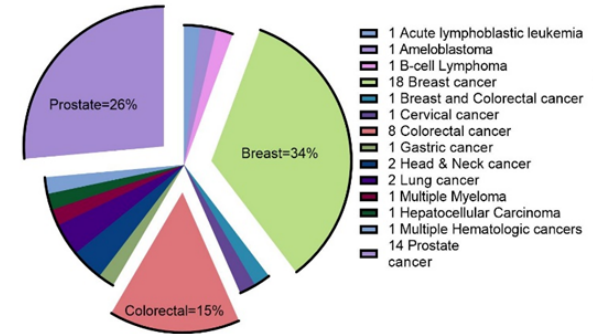
The infographic displays five focus areas in vertical panels:

- Diversity Training:** Includes logos for CURE (Continuing Umbrella of Research Experiences) and iCURE (Enhancing Diversity in the NCI Intramural Research Community).
- Workforce Diversity:** Includes logos for NCI Cancer Microscholarship Scholars and EARIP (Early Investigator Advancement Program).
- Partnerships:** Includes the Partnership to Advance Cancer Health Equity (PACHE) and a map of the United States.
- Networks:** Includes logos for TEAM (Transformative Educational Advancement and Mentoring Network) and CUSP2CT (Connecting Underrepresented Populations to Clinical Trials).
- Disparities and Equity Program:** Includes the text 'Basic and translational research' and a collage of images representing research, people, and medical supplies.

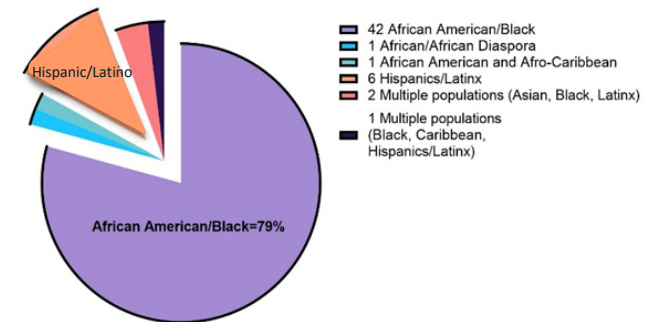
Basic Research in Cancer Health Disparities Program

- **PAR-21-322 (R01), PAR-21-323 (R21), PAR-21-324 (R03)**
- **Purpose: Support innovative basic research investigating the biological and genetic contributions of cancer disparities.**
- **Projects may seek to:**
 - Investigate mechanistic studies of biological factors associated with cancer disparities
 - Develop and test new methodologies and models
 - Conduct secondary data analyses
- **Since the program's inception:**
 - Over 150 grants have been funded
 - Research supported across 17 cancer sites
 - Over 1,100 publications
- **Last submission dates in June and July, 2024**

Cancer Categories (n=53) for Active Awards in FY2022



Populations Studied (n=53) Across Active FY22 Awards



Exploratory Grant Award to Promote Workforce Diversity in Basic Cancer Research

- **PAR-21-061 (R21)**
- **Purpose:** Enhance diversity of the cancer research workforce by supporting eligible [New Investigators](#) and [Early State Investigators](#) from backgrounds known to be underrepresented in biomedical research.
- **Goal:** Advance **basic research on the biology of cancer** while supporting eligible researchers to develop preliminary data for competitive R01 proposals.
- **Budget:** Direct Cost for 2 years; \$275k; no more than \$200k per year
- **Eligibility/Limit:** An individual cannot have a previous R01 (or equivalent) and may receive no more than 2 awards from the current, past or future iteration of this NOFO.
- **Last submission date is November 17, 2023**



Contacts

Sangeeta Ghosh, PhD
sangeeta.ghosh@nih.gov

Laritza M. Rodriguez, MD., PhD.
laritza.rodriquez@nih.gov

Cancer Moonshot Scholars program

- **RFA-CA-22-050 (R01)**
- **Purpose:** Advance cancer research, while also diversifying the pool of researchers and the approaches to cancer research that NCI funds.
- **Aligned with the goals for new phase of the Cancer Moonshotsm**
 - Inspire and support the next generation of diverse, innovative cancer researchers
 - Increase diversity of cancer research and care workforce to better resemble the communities we serve
- **Last submission date is February 06, 2024**



Eligibility and Research Scope for RFA-CA-22-050

1. Proposed research must align with the NCI's scientific mission
2. Contact PIs must be an Early-Stage Investigator
 - MPI applications are allowed, however only the contact PI must be an ESI
3. Contact PIs must include an Institutional Eligibility Letter describing their contribution to the RFA goals

NCI Mission and Scope



<https://www.cancer.gov/about-nci/overview>

Stay Connected

Have questions?

Tiffany.Wallace@nih.gov

More information



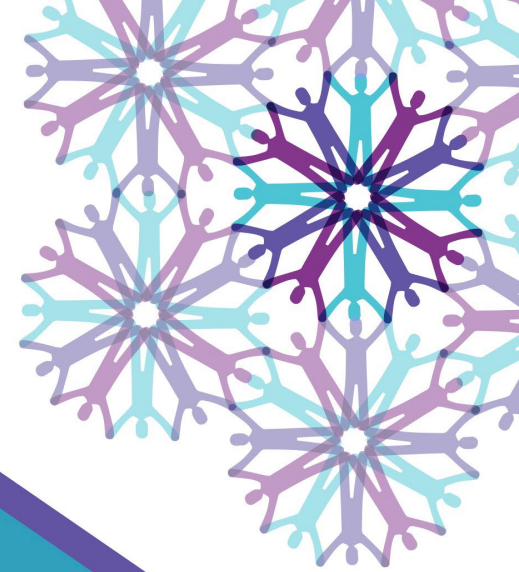
@ncicrhd



NCI Center to Reduce Cancer
Health Disparities (CRCHD)



<http://crchd.cancer.gov>



**NATIONAL
CANCER
INSTITUTE**

cancer.gov/crchd